



Jabra

IBM LOTUS SAMETIME USER'S GUIDE

A BRAND BY



JABRA® IS A REGISTERED TRADEMARK OF GN NETCOM A/S

WWW.JABRA.COM

INSTALLATION GUIDE FOR JABRA CALL CONTROL PLUG-IN FOR IBM LOTUS SAMETIME CONNECT

INTRODUCTION

This guide describes how to install the Jabra Call Control Plug-in for IBM Lotus Sametime Connect. This plug-in enables call control from your headset buttons during voice/video conversations in Sametime Connect. Call control covers the ability to answer/end, mute/unmute or hold/resume a call.

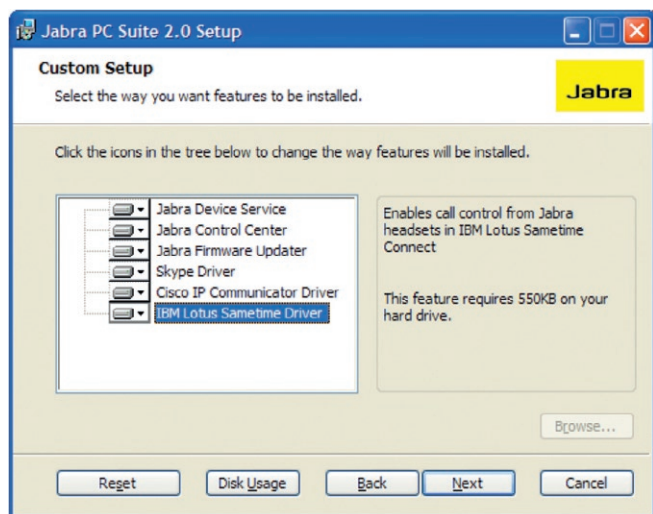
SYSTEM REQUIREMENTS

- PC running Microsoft Windows XP or later
- IBM Lotus Sametime Connect version 8.0.1
- Jabra PC Suite version 2.0.24 or later
- A USB-corded Jabra headset, dongle or base station supported by Jabra PC Suite

INSTALLATION

Start by installing IBM Lotus Sametime Connect version 8.0.1 on your PC, if it is not already installed.

Then you install Jabra PC Suite version 2.0.24 or later. In the Jabra PC Suite installation wizard make sure you choose to install the "IBM Lotus Sametime Driver" feature as shown below.

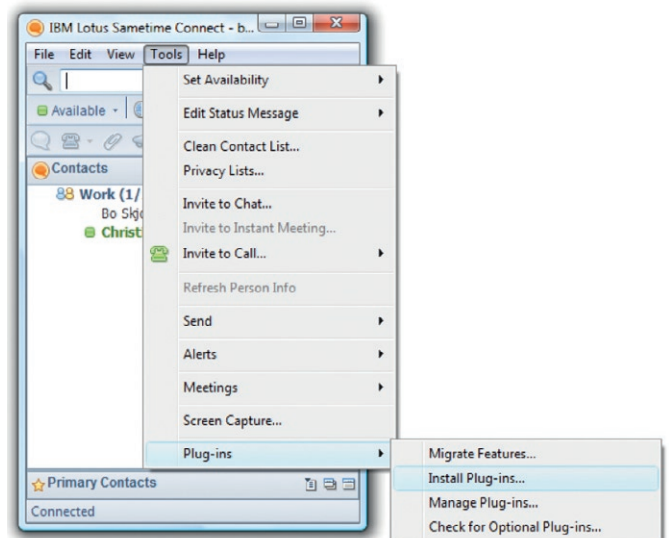


After installation of Jabra PC Suite you will find a Jabra plug-in for Sametime in a subfolder called "Sametime plugin" under the Jabra PC Suite installation folder (C:\Program Files\Jabra\Jabra PC Suite). The plug-in is contained in an archive (a ZIP file) called JabraSametimePluginUpdateSite.zip.

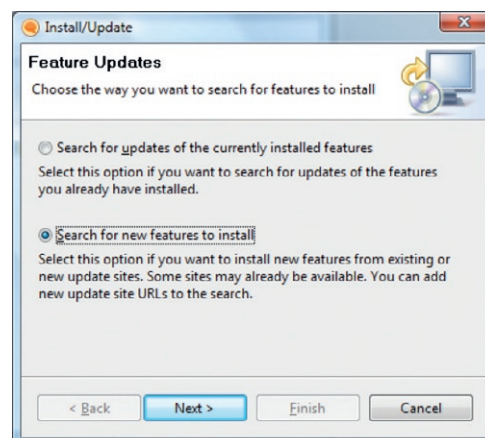
If you already have a previous version of the Jabra Sametime plug-in installed you must start by uninstalling the old version. See the last section of this document for instructions on how to uninstall the plug-in.

To install the Jabra plug-in in Lotus Sametime Connect follow the steps below:

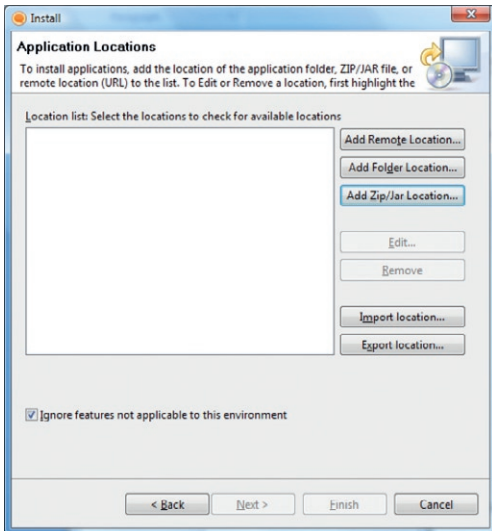
1. Start Lotus Sametime Connect and login.
2. Open the **Tools** menu and select **Plug-ins, Install Plug-ins...**



3. In the Install/Update wizard you select "Search for new fea

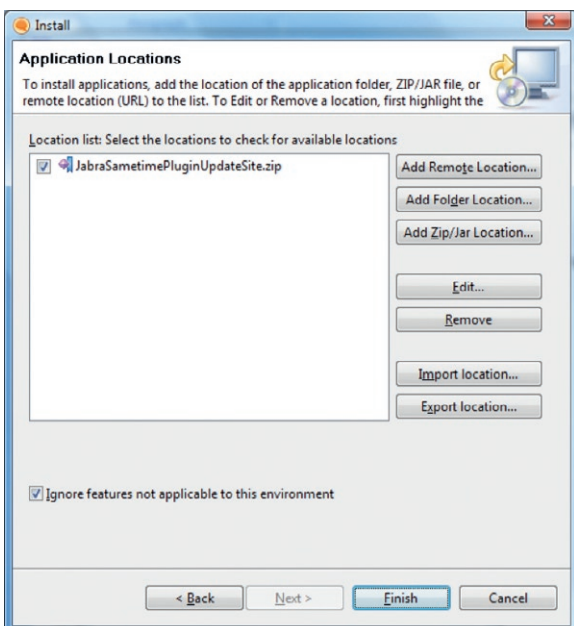


4. In the next step you click on the **Add Zip/Jar Location...** button.



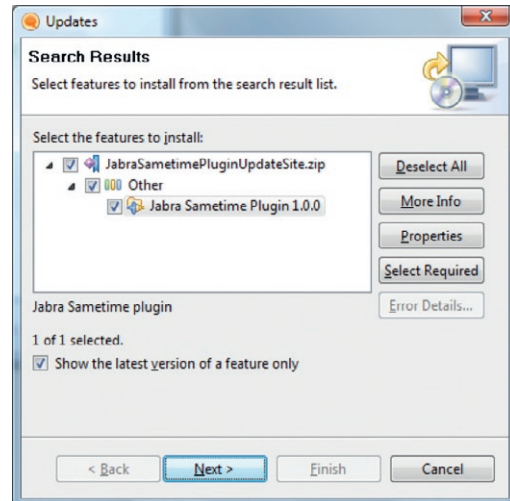
In the **Select Local Site Archive** dialog that opens you select the JabraSametimePluginUpdateSite.zip archive in the folder C:\Program Files\Jabra\Jabra PC Suite\Sametime plugin and click OK. Click OK again in the **Edit Local Site** dialog box.

The wizard should now show this page:



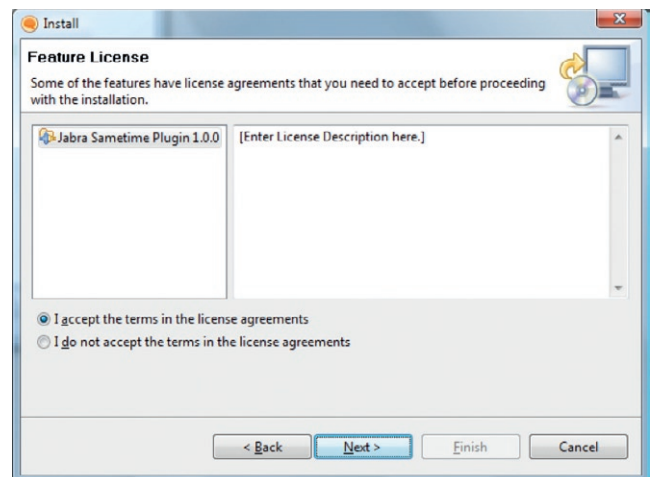
Make sure the checkbox is checked and click Finish.

5. In the next step you see this window:



Make sure all checkboxes are checked and press Next. Your Jabra Sametime Plugin version may be higher than 1.0.0 shown in the example above.

6. In the next step you must accept the license agreement and click Next.

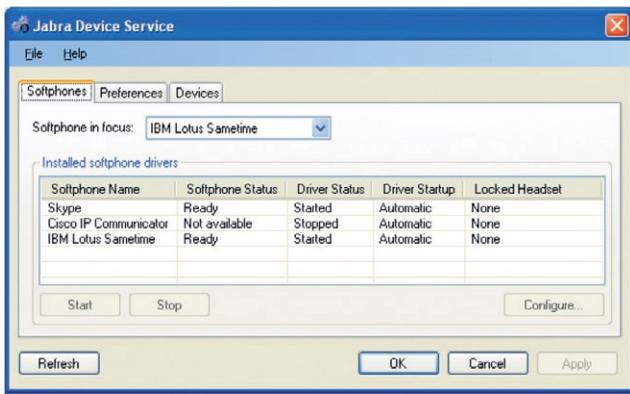


7. Complete the remaining steps in the wizard. You need to restart Sametime to complete the installation. The installed plug-in has no user interface and is not visible. It is a service that is started together with Sametime Connect and is running in the background. The plug-in communicates with the Sametime driver in Jabra PC Suite.

VERIFY INSTALLATION

To verify the installation start Jabra Device Service by clicking on the Start button in Windows' Taskbar and select **All Programs, Jabra, Jabra PC Suite, Jabra Device Service**. After a few seconds a Jabra logo icon will appear in the notification area in Windows' Taskbar. Right-click on this icon and select **Open Device Service**.

This brings up the window below:



In the Installed softphone drivers table make sure the softphone status is Ready and the driver status is Started for IBM Lotus Sametime. If the driver status is not Started select the IBM Lotus Sametime row in the table and press the Start button.

If the softphone status is not Ready verify that:

- Lotus Sametime Connect has been started and you have logged in.
- The Jabra plug-in for Sametime has been installed in Sametime Connect as explained above.

Make sure the Softphone in focus selection is set to "IBM Lotus Sametime".

TEST THE PLUG-IN

When you have verified the installation and Jabra Device Service and the IBM Lotus Sametime Driver is running you can start up IBM Lotus Sametime Connect to start testing the Jabra headset integration in Sametime.

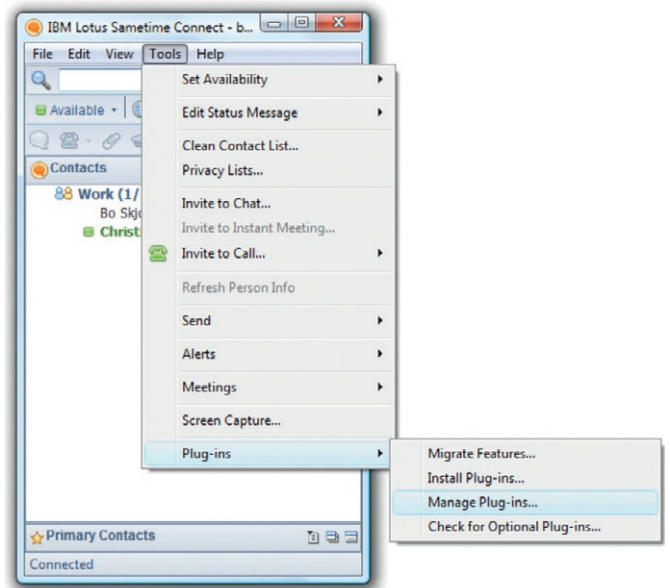
Plug-in a Jabra device into a USB port on the PC and start a call in Sametime. You should now be able to perform these actions from the headset buttons (features available depends on the type of Jabra headset):

- Accept an incoming call
- End the active call
- Put active call on hold
- Resume a call on hold
- Mute the headset microphone
- Un-mute the headset microphone

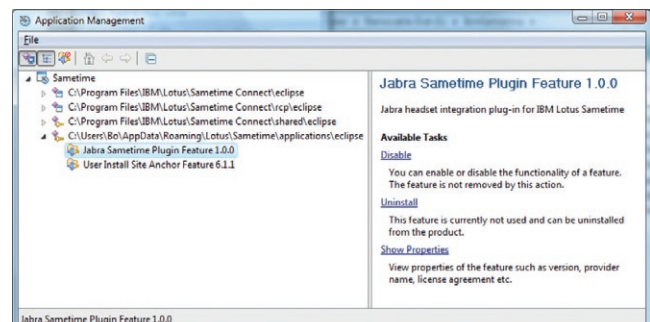
UNINSTALLATION

To uninstall the plug-in from Lotus Sametime Connect follow the steps below.

1. Open the **Tools** menu and select **Plug-ins, Manage Plug-ins...**



2. In the window below find and select the "Jabra Sametime Plugin" feature in the tree view on the left hand side.



In the panel on the right hand side you click on the Uninstall link.